



Camphill School Aberdeen
Building Futures, Transforming Lives

Help us create Aberdeen's first fully inclusive outdoor sensory adventure and learning playground



Every child has an equal right to access play.

An equal right to play

Children in Aberdeen who have sensory disabilities have no dedicated, free, outdoor adventure playgrounds where they can experience the simple joy of play.

The UN Convention on the Rights of the Child state that “Every child has an equal right to play”. However for young people with sensory disorders and their families, visiting public playgrounds leaves them feeling anxious, judged and excluded.

Our new sensory outdoor adventure and learning playground, endorsed by the National Autistic Society, will provide a safe and inclusive space for children and young people from across the region.

Located on our peaceful Camphill Estate near Milltimber, the playground has been designed to reduce sensory overload and engage sensory experiences such as touch, sight, sound, and smell.



There are 35,000 children with registered additional support needs (ASN) in Aberdeen City

78% of parents surveyed feel unable to access public parks because of judgment by the public, sensory concerns and challenging behaviours.



Our ask of you

Together we can transform the lives of vulnerable children and young people in Aberdeen by making safe and inclusive access to play a reality.

We need your support to make this project a reality and support thousands of vulnerable children and young people with sensory disorders and their families living in Aberdeen.

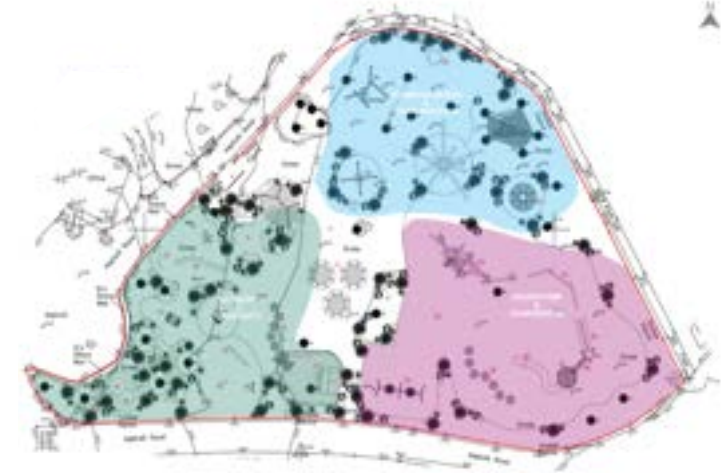
Our inclusive, sensory playpark is divided into three zones: sensory & creative, communication & team building, and adventure & confidence.

But we need your help to turn our vision into a reality.

Site Zoning Plan

Key

-  Sensory & Creative
-  Communication & Team Building
-  Adventure & Confidence



- **Rowan** - a donation of £1,500 would purchase a piece of equipment such as a log drum kit.
- **Silver Birch** - a donation of £5,000 would purchase a piece of equipment such as a covered sand pit.
- **Scots pine** - a donation of £10,000 would purchase equipment such as a triangular climbing podium.
- **Oak** - a donation of £20,000 would purchase equipment such as the chillout nets suspended in the trees

A donation of any size helps us get closer to our fundraising target.

100% of parents we surveyed see outdoor play and learning being vital for their child's development and wellbeing.

Free from judgment and free for all

Our playground will be open to all children, young people, specialised Additional Support Need bases, and charities in the North East of Scotland who will benefit from access to a relaxed play environment and play equipment, through a booking system, at no cost, all year round.

“ Callum can't access normal parks for various reasons so we never experienced this activity, he is now 26. To see him have fun in a play park would mean everything to me.”
Parent 2023



Let's ensure every child has an equal right to play in our city and ensure families are never left anxious, judged or excluded.



Find out how you can help bring our playpark to life. Get in touch with our fundraising team at buildingfutures@camphillestates.org.uk or call us on **01224 900051**.

camphillschools.org.uk

Charity Number SC015588 Company No.SC103899



Camphill School Aberdeen
Building Futures, Transforming Lives



Camphill Rudolf Steiner Schools Limited is a Scottish charity known as Camphill School Aberdeen. A Limited Company registered in Scotland.

Registered Office: Brodies House 31-33 Union Grove Aberdeen AB10 6SD.

Correspondence Address: CSA, Murtle Office, Murtle Estate, Bieldside, Aberdeen. Registered Company No. SC103899 Registered Charity No. SC015588.